

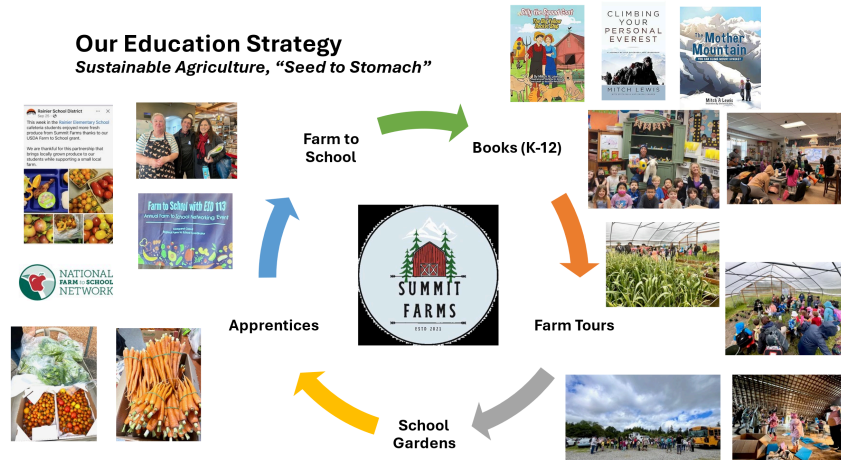


[www.summitfarms.co](http://www.summitfarms.co)



## Cultivating Growth Through Education

At Summit Farms, we believe in connecting students to the source of their food and fostering a deep appreciation for the environment. We're committed to partnering with local schools and educators to provide engaging, first-hand learning experiences that bring the "seed to stomach" journey to life. Our Educational Initiatives include:



### • Environmental Stewardship & Conservation:

- We've established strong partnerships with agencies such as the *Thurston Conservation District*, *Partners for Fish and Wildlife*, and the *USDA's NRCS* to implement sustainable practices and enhance local ecosystems; including wetland development for the Oregon Spotted Frog and the use of high tunnels for sustainable food production. These experiences offer valuable lessons in wildlife preservation and environmental responsibility.

### • Immersive Farm Tours:

- We host interactive farm tours for local school districts (*Olympia*, *North Thurston*), providing students with a comprehensive understanding of farm operations. These tours feature hands-on activities, such as exploring greenhouses, examining seeds with microscopes, and harvesting vegetables. Each tour is tailored to meet the specific learning objectives of the teachers, ensuring a relevant and engaging experience.

### • Apprenticeship and Volunteer Opportunities

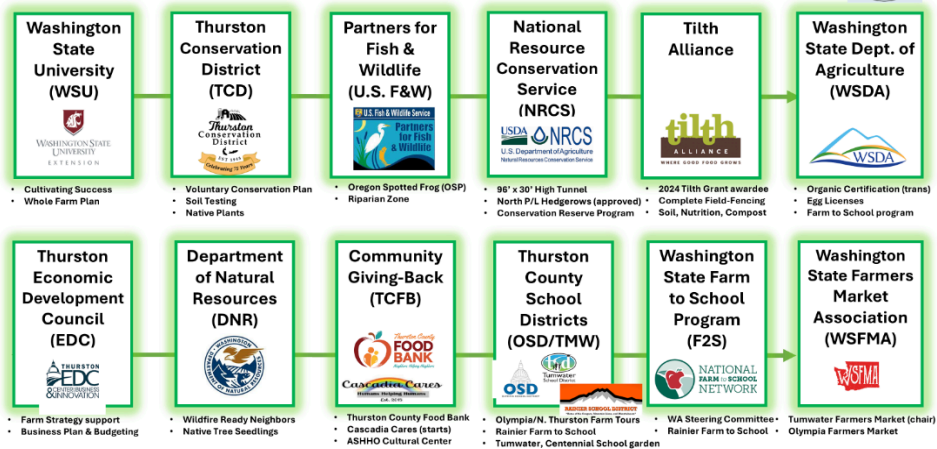
- We have hosted around two dozen WWOOFERS/Part-Time Farm-Hands along with Volunteers and Apprentices including from *Tumwater High School*. We DO have opportunities for the 2025 Season (May – October) for Tumwater School District High-Schoolers who would like to help and learn to grow, nurture, harvest, clean, pack, store and through to sale of vegetables along with sharing our strategies, community partnerships and business/grow plans.



www.summitfarms.co



### Our Partnerships Strategy Public/Private, City, County, State, Federal Supported



#### • Farm to School Partnership:

- Through the USDA Farm to School program, we partner with local schools to provide fresh, locally grown produce for student lunches. We work to maintain close communication with the school's Food Service Director, ensuring timely delivery of freshly harvested vegetables and fruits. This program promotes healthy eating habits and supports local agriculture.

#### • Career Mentoring and Leadership Skills:

- Our co-founder, Mitch, has published two books on Personal Development and Leadership: *Climbing Your Personal Everest – A Journey of Self-Discovery and Leadership* along with *Climb Higher – Pursue Your Passion With Purpose*. These books share both Mitch's ten-year journey to run a marathon and climb the highest summits on all Seven Continents, intertwined with learnings, lessons and end-of-chapter exercises that will resonate with those students about to enter the workforce, university, or other societal roles.

#### • Community & School Gardens:

- We support the *Peter G. Schmidt* and *Centennial Elementary School* gardens with seeds, starts and resources. We are open to supporting schools' gardens at Tumwater School District local schools that might already be in existence, including other local farmers who could contribute their own starts, seedlings, or other resources to contribute to the Food Banks.

#### For More Information:

- [mitch@summitfarms.co](mailto:mitch@summitfarms.co)
- [www.summitfarms.co](http://www.summitfarms.co)
- [www.yourpersonaleverest.com](http://www.yourpersonaleverest.com)